

**EDWARDS AQUIFER AUTHORITY**

HTGCCD - Burton Ranch Monitoring Well

LR-57-64-5

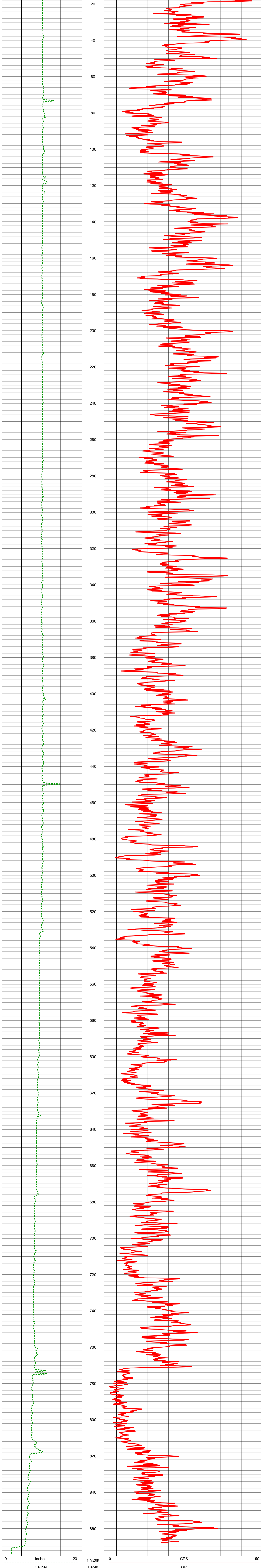
OTHER SERVICES  
Lateral Video Log

COMPANY: Edwards Aquifer Authority  
 WELL ID: HTGCCD Burton Ranch MW  
 STATE: Texas  
 COUNTY: Hays  
 LATITUDE: 30° 03' 10.8"  
 LONGITUDE: 98° 02' 59.3"  
 LOCATION: Wimberly

PERMANENT DATUM: Ground Surface  
 ELEVATION: 1,195 ft  
 LOG MEASURED FROM: Ground Surface  
 DRILLING MEAS. FROM: Ground Surface

DATE: January 2, 2020  
 TYPE FLUID IN HOLE: Trinity  
 SALINITY: C.L.

RUN No	1	TYPE LOG	Gamma Caliper	DENSITY	
DEPTH-DRILLER	875 ft	DEPTH TO WATER	367		
DEPTH-LOGGER	875 ft				
LOG DEEPEST	875				
LOG SHALLOW					
AMBIENT TEMP	55				
RECORDED BY	J.A.				
WITNESSED BY	RE. and P. W.				



RUN	NO.	BIT	FROM	TO	SIZE	WGT.	FROM	TO
			0	9.78 in				
				875 ft				